



Accessibility Plan Broughton Primary School

CONTENTS

- 1. Access Plan and Objectives 2
- 2. Apprndix 1: Plan of the School Building showing areas of Accessibility 4



Broughton Primary School Accessibility Plan

1. Introduction

At Broughton Primary School, we believe that every child, staff member, and visitor should have equal access to everything our school has to offer. This Accessibility Plan sets out how we are working to make our school as inclusive and accessible as possible, in line with the *Equality Act 2010* and guidance from the Department for Education.

The *Equality Act 2010* replaced previous laws, including the *Disability Discrimination Act*, but the key message remains the same:

“Schools cannot unlawfully discriminate against pupils because of sex, race, disability, religion or belief, and sexual orientation.”

A person is considered to have a disability if:

- They have a physical or mental impairment, and
- That impairment has a significant and long-term impact on their ability to do everyday activities.

This plan is designed to complement our **Equality Objectives**, and the Local Authority helps us ensure we are meeting our legal responsibilities when it comes to accessibility.

2. Aims

We want to make sure that everyone - pupils, staff, and visitors - feels welcome and supported at Broughton Primary School. This plan outlines how we are improving access to our school over time and how we can make reasonable adjustments to meet different needs.

Main focus:

- ✓ Making sure our **school environment** is accessible to everyone.
- ✓ Ensuring all pupils can **fully access the curriculum** in a way that works for them.
- ✓ Improving the way we **communicate information**, so it's easy to understand for all.

We also recognise the importance of **raising awareness** among staff and Governors about equality and accessibility, so we will continue to provide relevant training.

3. How This Fits in With Other Policies

This plan works alongside other important school policies, including:

- Behaviour Policy
- Curriculum Planning
- Health & Safety Policy
- School Improvement Plan
- SEND Policy
- Supporting Pupils with Medical Conditions Policy

Health, Safety & Accident
Policy – Finance/Premises,
H&S Committee

4. Monitoring

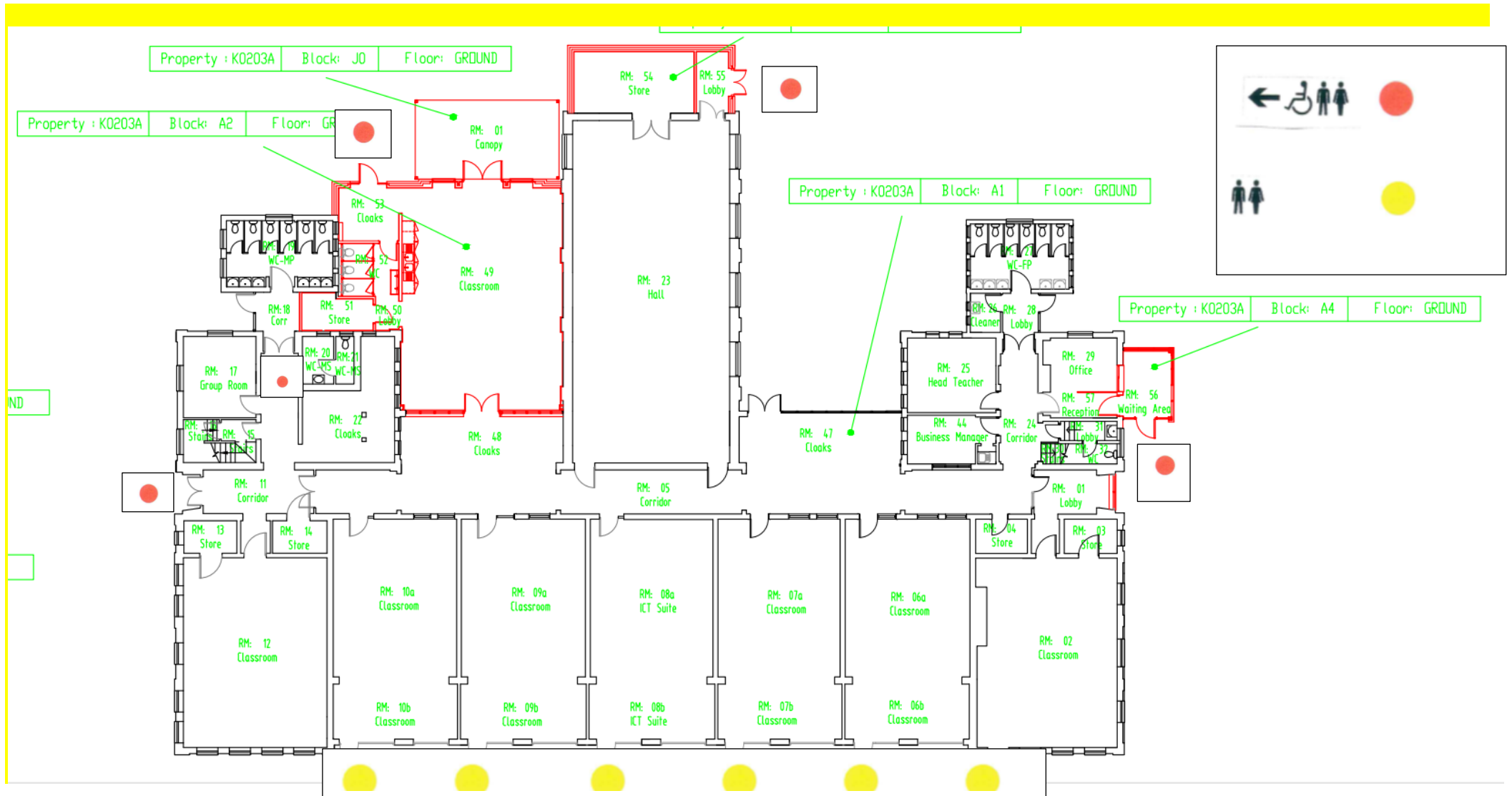
- We will carry out regular **audits and reviews** to check how we are doing and what else needs to be done.
- The plan will be **available on our school website** for everyone to see.
- Ofsted may also review it during their inspections to ensure we are meeting accessibility standards.

This Accessibility Plan will be **reviewed at least every three years**, but we will update it sooner if needed. Our **Governing Body** will oversee and approve any changes.

We are committed to making Broughton Primary School a place where everyone can learn, work, and visit without barriers. If you have any ideas or suggestions, we'd love to hear from you!



APPENDIX 1: A Plan of the School Buildings showing areas of accessibility



Health, Safety & Accident
Policy – Finance/Premises,
H&S Committee



APPENDIX 2: Action Plan

Access needed	Already in place	Action needed	Timescale
Disabled access to main school building	Ramp into the front entrance, compliant to disability regulations, ramp to the rear of the school building. Disabled accessible toilet	Chair lifts fitted as needed.	On the SDP to be completed when funds allow or if needed.
Information to parents with disabilities	The school is aware of services through the LA for converting written information into different formats such as braille. School provides support via the school administrator for parents who may need support.	If required, the school can provide information in different formats and support parents with documents/internet accounts.	Ongoing
Classroom spaces are suitable for pupils with disabilities	The school will liaise with the VI/HI teams to meet the needs of children. Blinds fitted in all rooms Classrooms carpeted Doors and walls painted contrasting colours Radio Microphone in use for hard of hearing students	Continue to maintain school building to high standard.	Ongoing
All pupils are included in the National Curriculum	Experienced Special Educational Co-ordinating Team High staff to pupil ratio Funding in place for pupils with additional needs Training for all staff on SEN as needed	Teaching teams can meet the needs of all pupils	Ongoing